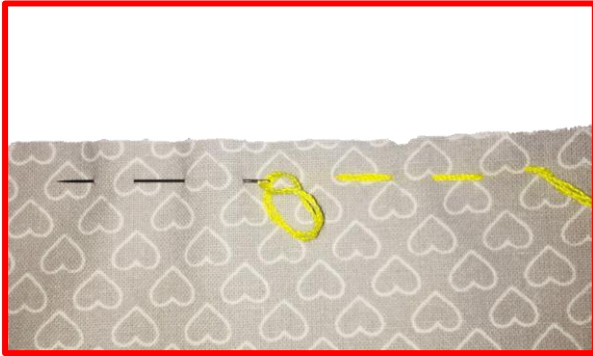


# Hand Stitches

ROSA MAY   
*crafts*

## BASIC HAND STITCHES



### **RUNNING, BASTING/TACKING STITCH.**

These are long “running” stitches. They used to hold pieces of fabric together, ready for hand or machine sewing. The stitch is done, approximately 3 mm from raw edge, so that you do not stitch over it and it will then be easier to remove.



### **RUNNING, BASTING/TACKING STITCH.**

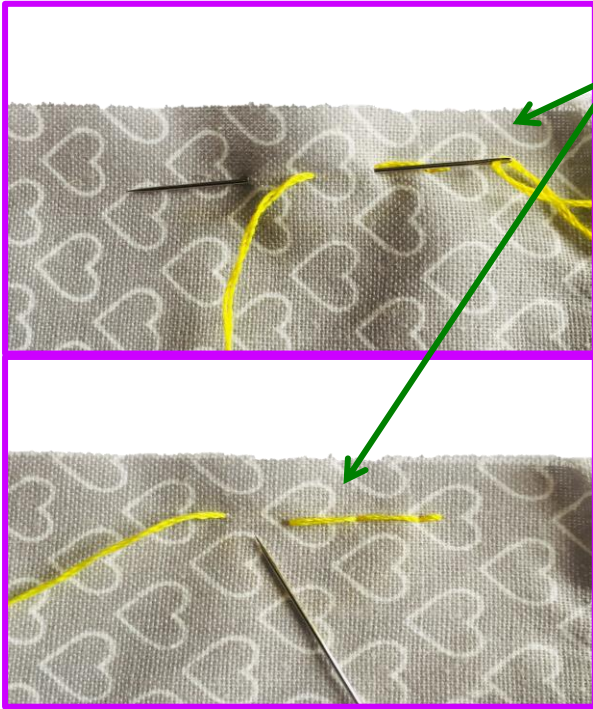
This same stitch is used for gathering your fabric. You can create small running stitches, which will give more and smaller gathers.



### **RUNNING, BASTING/TACKING STITCH.**

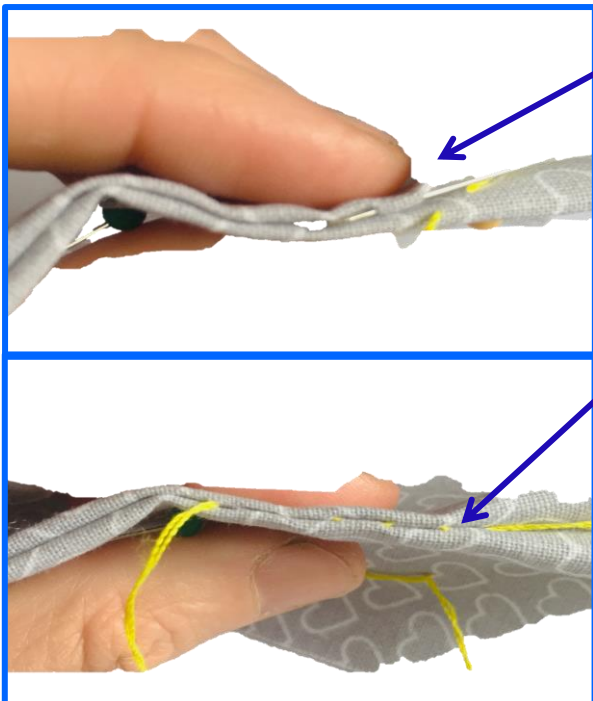
This same stitch is used for gathering your fabric. You can create larger running stitches, which will give less gathers and a more “pleated look”.





**BACK STITCH.**

This is another type of running stitch, BUT you are working left to right or backwards, creating a line of stitches. This stitch is used for mending, hand sewing small projects or adding a zipper. If you need a strong stitch to hold your motive or décor in place, this is the stitch to use.



**SLIP or LADDER STITCH.**

This stitch is an “invisible” stitch to sew a seam closed or where a sewing machine cannot reach or a machine stitch will not look neat and tidy. It is used to close up seams where you have used stuffing – stuffed toy or cushion.





#### **MARKING STITCH (AS I CALL IT)**

I use this single stitch to mark the front of my fabric, or when I have say two ears. I mark the two front ears. This is a similar to a running stitch, except that it is created in one spot. Very similar to a tacking stitch.

#### **NOTES & TIPS:**

1. Use your last bits of thread on your bobbin or thread reel for the tacking/running/basting and marking stitches.
2. I also prefer to use a different coloured thread when using it tacking/basting, as it will be easier to remove visually.
3. Please note that I have used yellow thread for visual purposes only, you would need to use a thread colour that matches your fabric, unless you are creating applique patterns which you can use a multitude of colours.
4. These are very basic and commonly used hand stitches; there are several more that are used.