

CROCHET HOOKS AND YARN NEEDLES

METAL



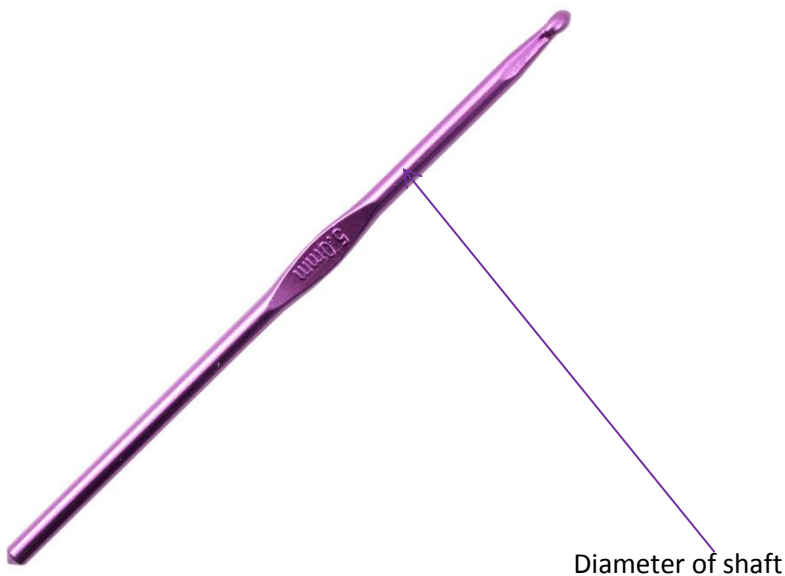
WOODEN



ERGONOMIC WITH SOFT RUBBER GRIPS



YARN/WOOL NEEDLES



Crochet hooks come in various sizes and are made from a variety of mediums, as per above images. General metal hooks are for fine crochet cotton and wooden for synthetic yarns/wool. I personally mix and match and work with what I feel is comfortable. The diameter of the shaft determines the size. There are 3 types of sizing – Metric; UK & USA. With the online shops, you can buy any size, regardless of what country you are in. If you are not certain, check with your supplier or as I offer a two week free Q & A via email you are more than welcome to ask me.

CROCHET HOOK CONVERSION CHART

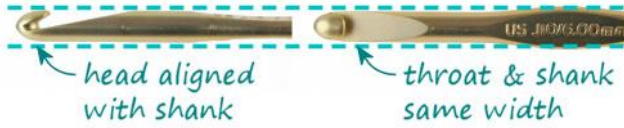
There are larger sizes of crochet hooks for large projects. If you are a beginner, I would get 3 to 5 different sizes and then go from there.

You can also buy crochets sets, which are very cost effective.

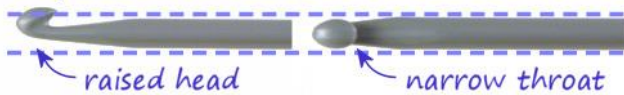
Crochet Hook Styles

www.planetjune.com

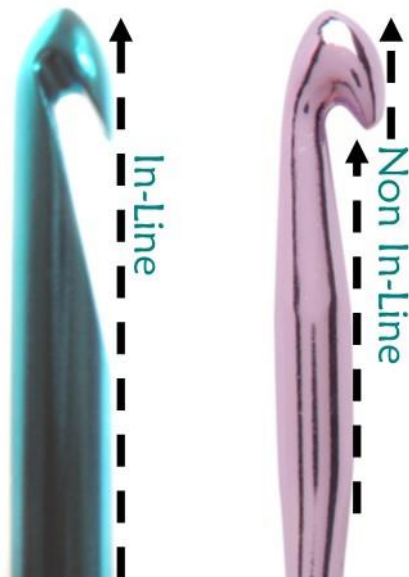
In-line:



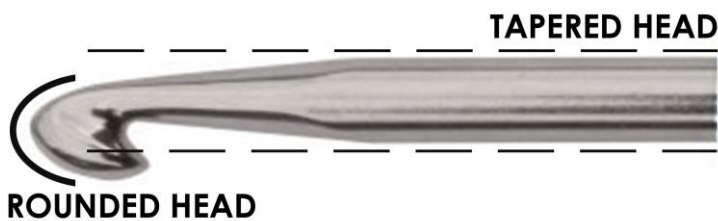
Tapered:



Credit Image – Planet June



Credit Image – Geeks and Geekloets



Creatively made-in Home.com

Credit Image – Creatively made in the Home.

CROCHET HOOK CONVERSION CHART

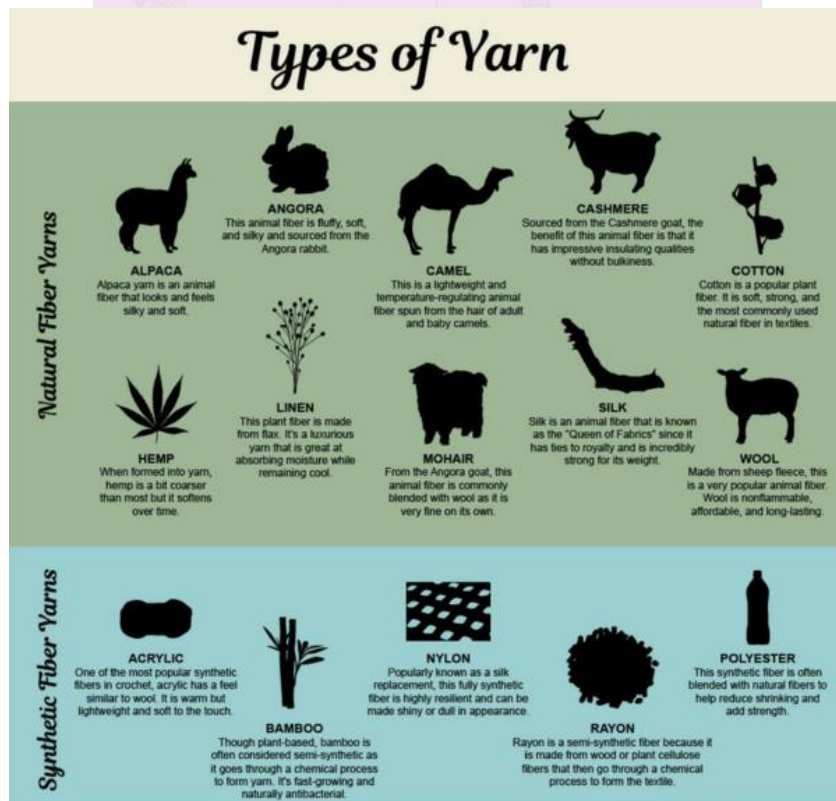
There are larger sizes of crochet hooks for large projects. If you are a beginner, I would get 3 to 5 different sizes and then go from there.

You can also buy crochets sets, which are very cost effective.

METRIC	UK	USA
2.00 MM	14	0
2.25 MM	13	1/B
2.50 MM	12	N/A
2.75 MM	11	C
3.00 MM	11	N/A
3.25 MM	10	D
3.50 MM	9	4/E
3.75 MM	N/A	F
4.00 MM	8	6
4.25 MM	N/A	G
4.50 MM	7	7
5.00 MM	6	8/H
5.50 MM	5	9/I
6.00 MM	4	10/J
6.50 MM	3	10 ½ /K
7.00 MM	2	N/A
8.00 MM	0	N/A
9.00 MM	00	15/N
10.00 MM	000	P

YARN/WOOL INFORMATION

There is a large variety of wool/yarn to use. The image below is great advice for beginners.
Credit – thesprucecrafts.com



ALLFREECROCHET www.allfreecrochet.com
For more patterns, tips, and inspiration, visit www.allfreecrochet.com



CROCHET DIAGRAM SYMBOLS

PLEASE NOTE THAT THESE ARE GENERALLY USED SYMBOLS, THERE MIGHT BE SLIGHT VARIATIONS BETWEEN USA, UK AND JAPAN.

Crochet symbol diagrams are just another way of reading a crochet pattern. As you can see in the chart below, each symbol represents a crochet stitch. A chart is generally read from bottom to top and are written for right handed creative crafters.

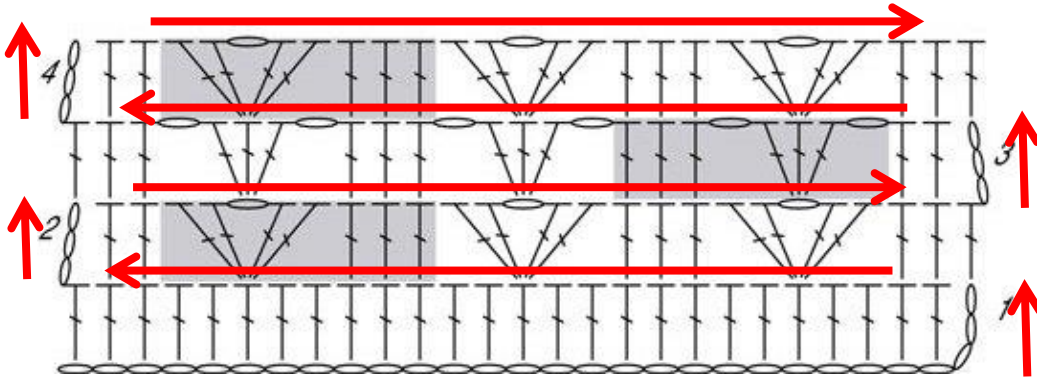


Image credit – Dummies.com

STITCH KEY		
<ul style="list-style-type: none"> ○ = chain (ch) • = slip st (sl st) ⊥ = single crochet (sc) ┆ = half double crochet (hdc) ┆ = double crochet (dc) ┆ = treble crochet (tr) ┆ = double treble crochet (dtr) ┆ = reverse sc ┆ = long sc ┆ = long dc ⌘ = crossed dc ┆ = bullion st ┆ = linked hdc ┆ = linked dc ┆ = linked trc ⌒ = worked in back loop only ⌒ = worked in front loop only 	<ul style="list-style-type: none"> ┆ = front post dc (FPdc) ┆ = back post dc (BPdc) ┆ = front post trc (FPtr) ⌘ = sc3tog ┆ = dc2tog ┆ = dc3tog ⌘ = bobbles ┆ = dc5tog ┆ = dc7tog ┆ = dc9tog ┆ = tr2tog ┆ = tr3tog ┆ = dtr2tog 	<ul style="list-style-type: none"> ┆ = hdc3tog ⌘ = puff sts ┆ = criss-cross puff st ┆ = side puff st ⌘ = popcorns ┆ = star st ⌘ = picot ⌘ = Limpet st ⌘ = Tatted Picot ↓ = placement of st
TUNISIAN STITCH KEY		
<ul style="list-style-type: none"> ┆ = Tunisian simple st (TSS) ┆ = purl ┆ = knit ┆ = FPtr ┆ = yo, skip next bar ┆ = dec 2 sts ┆ = cluster st 		

Abbreviations

Here is the list of standard abbreviations used for crochet. Until you can readily identify them, keep the list handy whenever you crochet.

approx	approximately	dc2tog	double crochet 2 stitches together	prev	previous
beg	begin/beginning	dec	decrease/decreases/ decreasing	qutr	quadruple triple crochet
bet	between	dtr	double treble	rem	remain/remaining
BL	back loop(s)	FL	front loop(s)	rep	repeat(s)
bo	bobble	fol	follow/follows/following	rev sc	reverse single crochet
BP	back post	FP	front post	rnd(s)	round(s)
BPdc	back post double crochet	FPdc	front post double crochet	RS	right side(s)
BPsc	back post single crochet	FPsc	front post single crochet	sc	single crochet
BPtr	back post triple crochet	FPtr	front post triple crochet	sc2tog	single crochet 2 stitches together
CC	contrasting color	g	gram(s)	sk	skip
ch	chain	hdc	half double crochet	Sl st	slip stitch
ch-	refers to chain or space previously made, e.g., ch-1 space	inc	increase/increases/increasing	sp(s)	space(s)
ch lp	chain loop	lp(s)	loop(s)	st(s)	stitch(es)
ch-sp	chain space	Lsc	long single crochet	tbl	through back loop(s)
CL	cluster(s)	m	meter(s)	tch	turning chain
cm	centimeter(s)	MC	main color	tfl	through front loop(s)
cont	continue	mm	millimeter(s)	tog	together
dc	double crochet	oz	ounce(s)	tr	triple crochet
		p	picot	trtr	triple treble crochet
		patt	pattern	tr2tog	triple crochet 2 together
		pc	popcorn	TSS	Tunisian simple stitch
		pm	place marker	WS	wrong side(s)
				yd	yard(s)
				yo	yarn over
				yoh	yarn over hook
				[]	Work instructions within brackets as many times as directed
				*	Repeat instructions following the single asterisk as directed
				**	Repeat instructions between asterisks as many times as directed or repeat from a given set of instructions

CROCHET ABBREVIATIONS

A list of abbreviations commonly used in crochet patterns.

UK & USA have slightly different terms for stitches. See below.

UK

double crochet
half treble
treble
double treble

USA

single crochet
half double crochet
double crochet
triple crochet