

BASIC GUIDE TO SEWING CUSHION COVERS – 3 TUTORIALS.

These processes can be used when creating pillow covers.

Disclaimer – Please note that I use my own terminology and my blogs, tips and tricks are my own way of crafting. There are so many different ways to create, find what is comfortable for you.

ZIP CUSHION COVER

This is probably the hardest and longest way to create a cushion cover.

Basic supplies needed

- Fabric – see our measurement chart below.
- Zip, there are various options to use – see our blogs, tips and tricks section.
- Scissors.
- Pins, Needle and matching thread
- Tape measure.
- Sewing machine.
- Zipper foot.

Basic instructions.

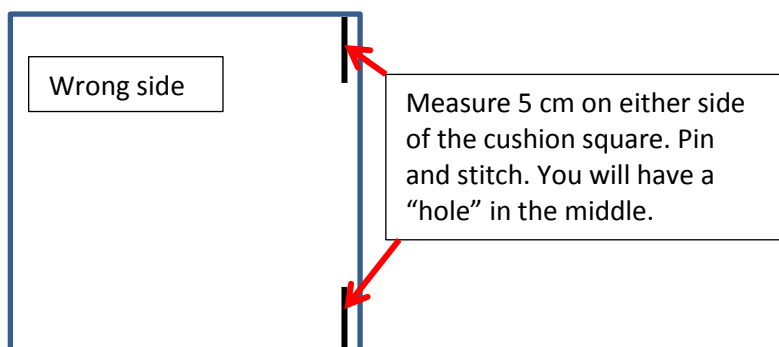
Step 1 .

Cut out your front and back piece. You can have matching fabric colours/print/design on both sides or front is one colour/print/design/applique and the back is plain colour.

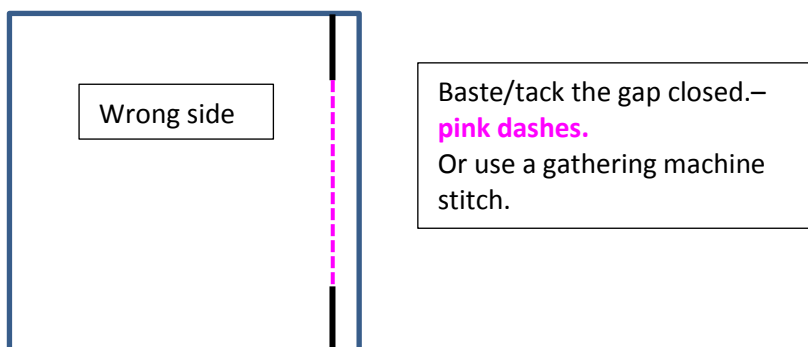
Step 2.

With right sides facing, place your front and back pieces together.

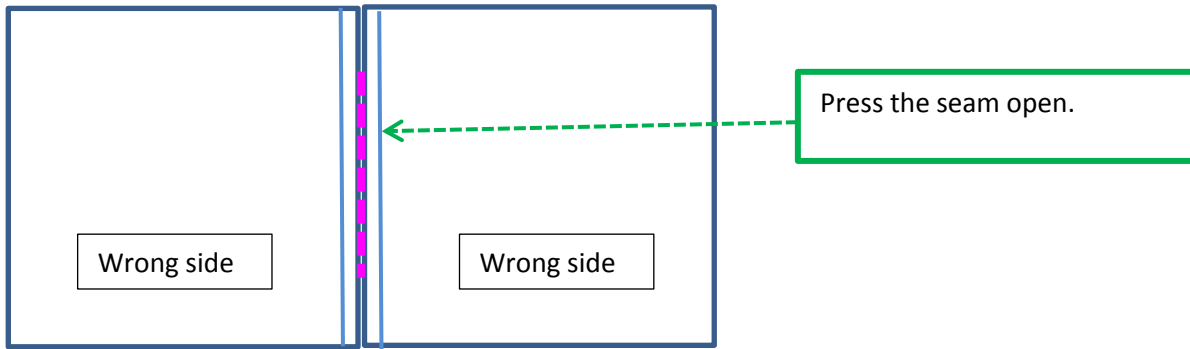
Step 3.



Step 4.



Step 4.



Step 5.

Place the zip, face down (right side) onto the pressed seam. It must fit the gap – **pink dashes**.

Pin and hand baste/tack the zip to the seam.

The coils of the zip must follow your basting/tacking line - **pink dashes**.



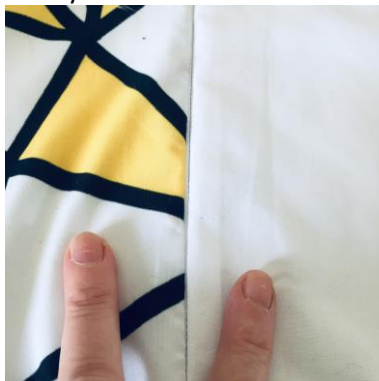
Step 6.

Using your zipper foot, stitch both sides of the zip – **blue dashes** – and zig-zag or overlock/serge seam.



Step 7.

Turn your cushion cover to the right side and remove/unpick the basting/tacking - **pink dashes**.



Step 8.

It is always a good idea to stitch the zipper ends top and bottom – **purple line**. Stitch a few stitches backwards and forwards.

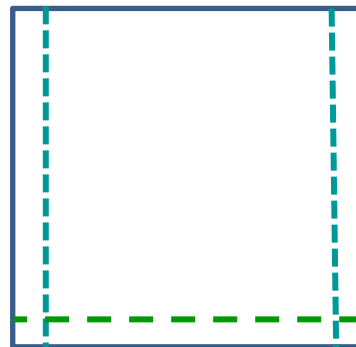


Step 8.

Fold the two sides inwards at the zip, with right sides facing.

Pin and stitch the sides. I prefer to stitch the 2 sides first and then the base. You can stitch the 2 sides and base/bottom all in one go. Clip corners.

You can either zig zag, overlock/serge or use pinking shears to stop the fraying of the seams.



Step 9.

Turn to the right side and press. Your cushion cover is complete.

2. Envelope Pillow cushion cover – using one length.

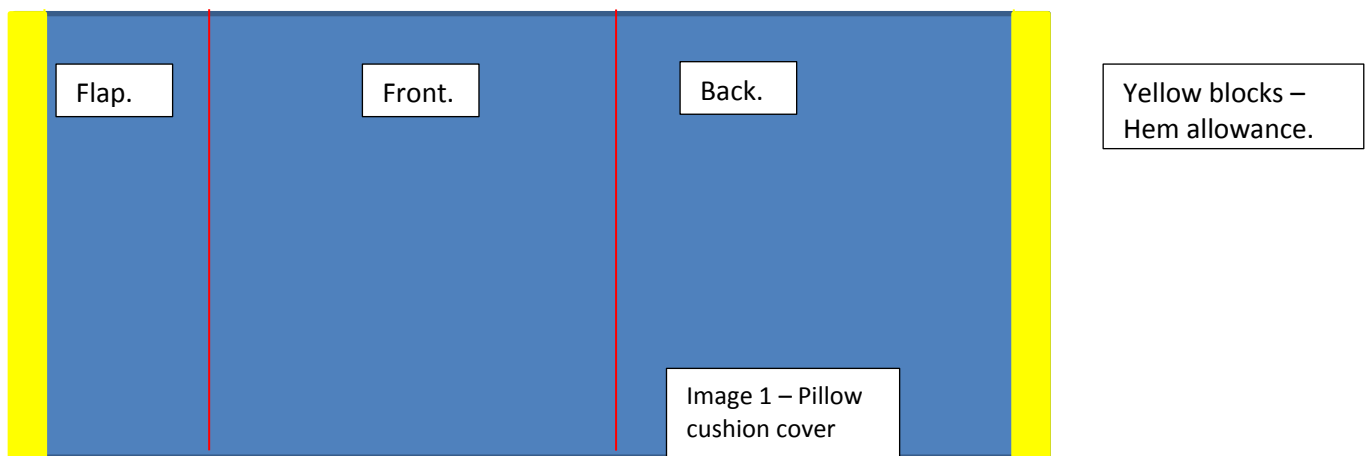
Basic supplies needed

- Fabric – see our measurement chart below.
- Zip, there are various options to use – see our blogs, tips and tricks section.
- Scissors.
- Pins, Needle and matching thread
- Tape measure.
- Sewing machine.
- Zipper foot.

Basic instructions.

Step 1 .

For this tutorial we are using one colour/print/design and will therefore will be cutting only one piece of fabric. You can use different colours/prints/design for front and back, this involves a little bit more sewing. For now we are keeping it simple.



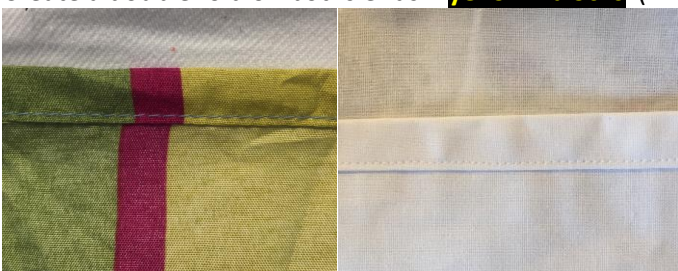
Step 2.

This is an optional step – I do a basting/tacking/gathering stitching along the fold lines – **red lines**. So that I know where to fold and my cushion cover will be the correct size.



Step 3.

Create a double fold on boths ends – **yellow “blocks”** (Image 1 Pillow cushion cover), pin and stitch. Press.



Step 4.

With right sides facing, fold back onto front fabric. Pin in place.

Then fold the flap over the back and front. So that the flap right side will face the wrong side of the back.



Step 4.

Straight stitch the sides together and then zig-zag/overlock/serge or use pinking shears to stop the seams from fraying. Voila the cushion cover is complete. Press and fill with cushion inner.



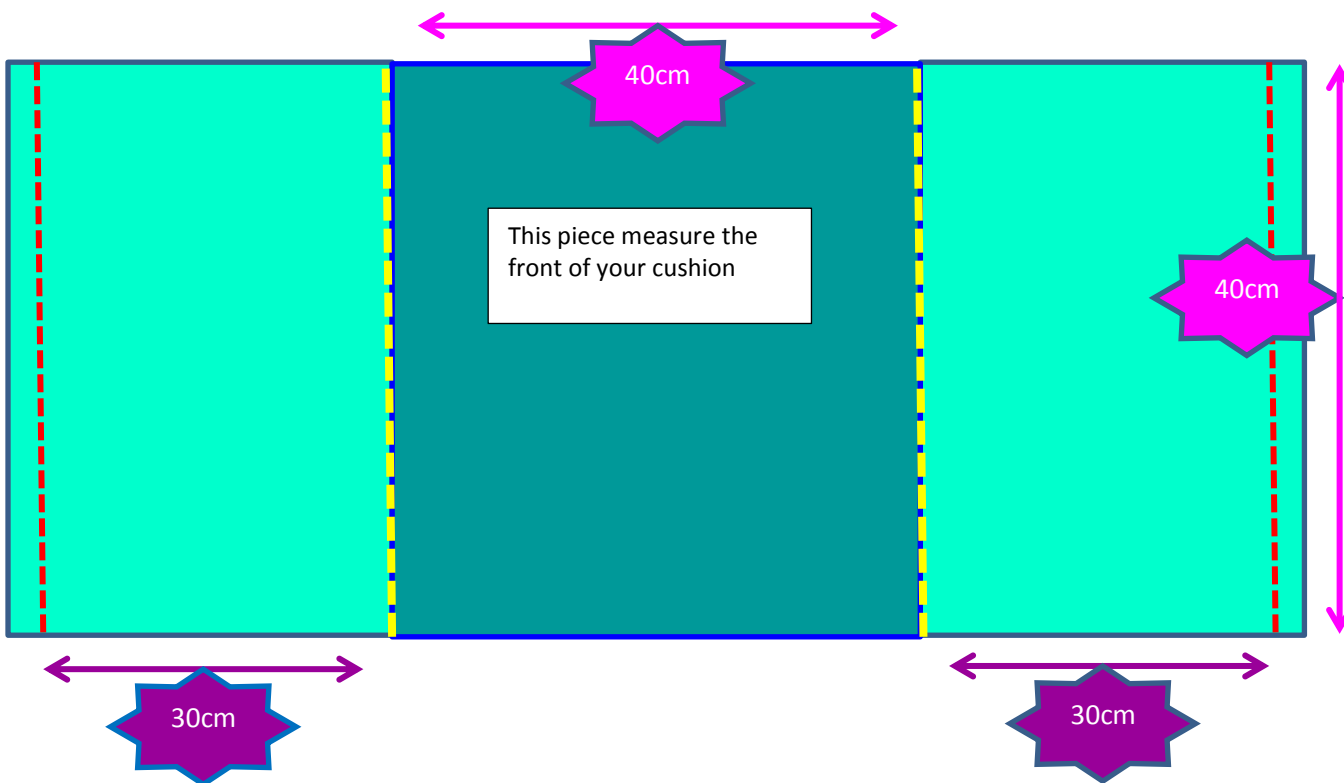
Completed cushion cover with inner.

3. Envelope cushion cover

– very similar to the Envelope Pillow cover, but this has what I call two “flaps” or 2 fabric pieces overlapping each other.

This envelope cushion can be created using one piece of fabric – see images below.

PLEASE NOTE THE IMAGE IS COLOUR CODED FOR VISUAL AND TUTORIAL PURPOSES ONLY. YOU WOULD ONLY CUT ONE PIECE OF FABRIC. We will also be using a 40 cm x 40 cm cushion for this tutorial and guide. See Measurements in the chart at the end.



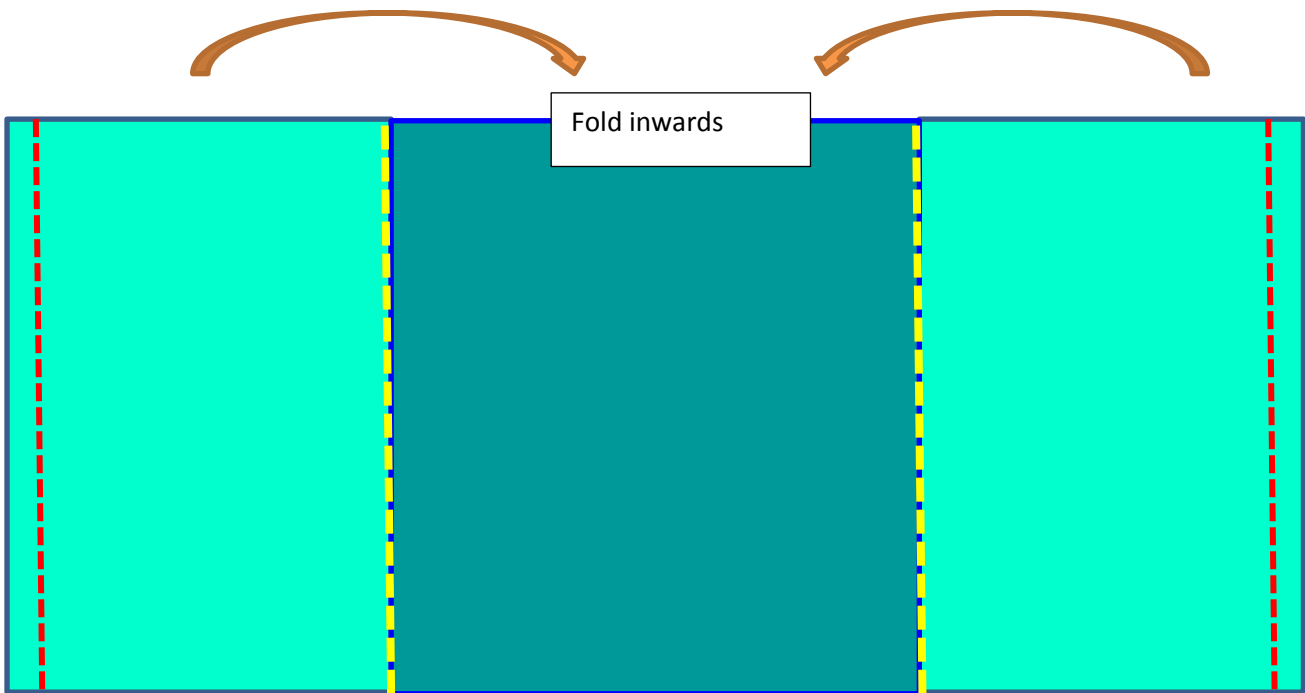
-Fabric requirements in total for one cushion cover is 40 cm height/width and 100 cm length, plus 4 cm double fold hem for the sides. Total fabric needed is 104 cm x 40 cm. I normally buy a little extra.

Basic formula is Front – 100% of cushion cover (40 cm) and back flaps are 75 % of the cushion cover (75% of 40 cm = 30 cm) and you will need two pieces.

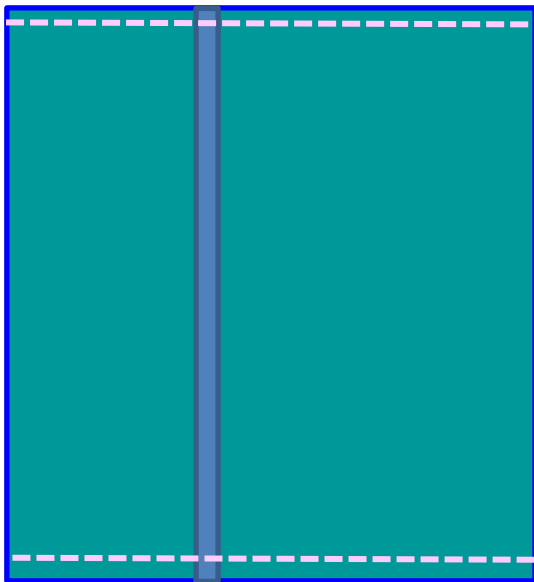
-Create a tacking/basting stitch where the cushion cover will need to fold – **yellow dashes** – you will then have the exact measurement for the front cover and will not be fiddling later. You can use a marking pen.

-Double fold, pin and stitch the sides.





With right sides facing, fold your fabric inwards, along your basting line – **yellow dashes.**



Pin and stitch the sides. Cut corners and zig-zag/overlock/serge or use pinking shear to stop seams from fraying. Turn to the right side and add your cushion insert.



At the end of the day, all the cushion covers look the same from the front.

Basic Guide to choosing the correct Cushion inners/insert/pad size.

It is suggested that you buy an insert slightly bigger than the cushion cover. This gives it a full and “plumpy” look. All the sides and corners fit snugly together.

There is a very basic chart for this.

It is recommended that you buy an insert approximately 5 cm larger than your cushion cover.

CUSHION COVER SIZE	CUSHION INSERT SIZE
40 cm x 40 cm	45 cm x 45 cm
45 cm x 45 cm	50 cm x 50 cm
50 cm x 50 cm	55 cm x 55 cm
60 cm x 60 cm	65 cm x 65 cm

BASIC GUIDELINE FOR BUYING FABRIC – measurements are for one cover only.

PLEASE NOTE THAT THIS IS A GUIDELINE ONLY.

Always check with your local fabric shop, when buying for more than one cushion cover

1. Zipper cushion cover

You will need to 2 pieces of the same size, plus seam allowance on both sides of 1 cm each.

40 cm x 40 cm	42 cm x 42 cm x 2 pieces – Total 84 cm x 42 cm
45 cm x 45 cm	47 cm x 47 cm x 2 pieces – Total 94 cm x 47 cm
50 cm x 50 cm	52 cm x 52 cm x 2 pieces – Total 104 cm x 52 cm
60 cm x 60 cm	62 cm x 62 cm x 2 pieces – Total 124 cm x 62 cm

2. Pillow cushion cover

You will need one piece, including the “inner flap” and seam allowance on both sides.

40 cm x 40 cm	1 piece – Total 92 cm x 42 cm
45 cm x 45 cm	1 piece – Total 105 cm x 47 cm
50 cm x 50 cm	1 piece – Total 118 cm x 52 cm
60 cm x 60 cm	1 piece – Total 143 cm x 62 cm

3. Envelope cushion cover.

You will need one piece, including the “inner flap” and seam allowance on both sides.

40 cm x 40 cm	1 piece – Total 104 cm x 42 cm
45 cm x 45 cm	1 piece – Total 115 cm x 47 cm
50 cm x 50 cm	1 piece – Total 130 cm x 52 cm
60 cm x 60 cm	1 piece – Total 154 cm x 62 cm

Basic guide to choosing your filling.

This is very personal and you will have to decide, but here are some basic guides. It depends on a variety of things:

- Is it for indoors or outdoors
- How do you want it to look?
- Does your family suffer from allergies

Feather filled

This is a very popular filling. It is made of feathers. This type of filling gives your cushion a soft look, but will flatten easily. Great for indoors only, but can cause allergies..

Eco Filling

This is made from recycled plastic bottles, they hold their shape and you are protecting the environment.

Hollow Fibre

This is a synthetic man made filling. It is great for indoors and outdoors and is anti-allergic.

There are so many more varieties – wool, feather and down, foam. Go and feel and test them, ask the local shop owner about the differences.

As advised at the beginning this is a basic guideline, to help you create basic cushion covers.

PROPERTY OF ROSA MAY CRAFTS.